



# AUTEXIER

MANUFACTURER OF INDUSTRIAL VALVES

93 Rue Louis Blanc - 02300 CHAUNY - FRANCE  
 Phone : +33 (0)3 23 52 02 86 Fax : +33 (0)3 23 39 52 28  
 Website : www.autexier.fr

Ref. AU190/AU290 Family:27

Rev. 09

Date : 30 Jan. 2026

Page 1/1

## ALUMINIUM BRONZE SAFETY VALVE

Ref. AU190.Ø / AU190.ØBP / AU390.Ø

### SERIES :

- AU190.Ø : FPM disc
- AU190.ØBP : VMQ disc (low pressure)
- AU390.Ø : PTFE disc
- Male inlet / female outlet
- With lifting test handlever

*For material compatibility, contact us*

### CARACTERISTICS :

- PN40 (Nominal Pressure)
- ENDS : BSP Threads
- MATERIAL : ALUMINIUM BRONZE CC333G

### MAXIMUM CONDITIONS OF USE :

- Ref. AU190 : 40 bar of -10°C to 200°C
- Ref. AU190BP : 40 bar of -10°C to 220°C
- Ref. AU390 : 40 bar of -10°C to 225°C

### APPLICATIONS :

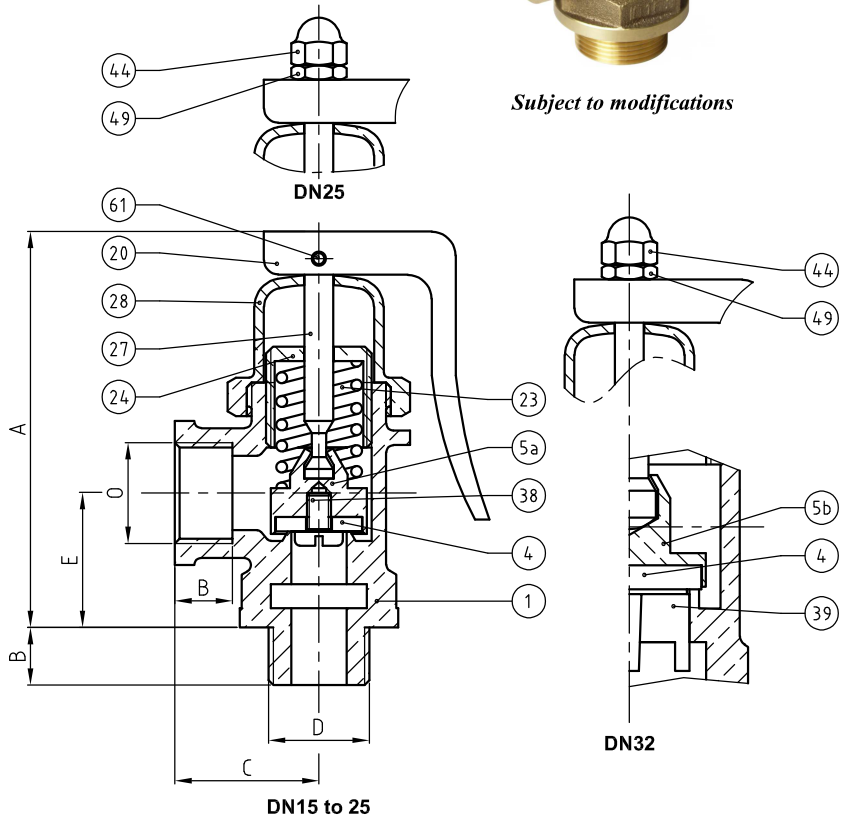
- Hot water and Industrial fluids
- Water-based fluids
- Steam up to 8 bar (FPM)
- Steam 8 to 15 bar (PTFE)
- Neutral gases (compressed air,...)

### OPTIONS :

- Degreased disc
  - Flanged or NPT connection
- Specific dimensions, contact us*



*Subject to modifications*



DIMENSIONS				
DN	15	20	25	32
A (mm)	88	100	120	149
B (mm)	12	14	16	18
C (mm)	30	35	40	45
E (mm)	28	35	39	43
D	G 1/2"	G 3/4"	G 1"	G 1 1/4"
O	G 1/2"	G 3/4"	G 1"	G 1 1/4"
Weight (Kg)	0.350	0.478	0.915	1.365
S inlet (mm <sup>2</sup> )	103.9	227.0	490.9	706.9
S outlet (mm <sup>2</sup> )	272.6	456.8	720.6	1191.6

### REFERENCES NORMS :

- Material : NF EN 1982 - NF EN 12163 - NF EN 12164 - NF EN 10272
- Testing & checking : NF EN 12266-1/-2 (bench test)
- Threads : ISO 228-1

Ref. instruction of assembling : 0904DA091E

Ref. instruction of operation : 0904DA094E

**Mounting & assembly guides are available on our website.**

*These data are for information and can be modified without notice. It is not up to us to appreciate specifications. It is up to the customer to verify the adequacy between the equipment chosen and the real conditions of use.*

NOMENCLATURE			
Rep	Qty	Designation	Material
1	1	BODY	ALUMINIUM BRONZE
4	1	DISC	190:FPM / 190BP:VMQ 390:PTFE
5a	1	DISC HOLDER (DN15 to DN25)	ALUMINIUM BRONZE
5b	1	DISC HOLDER (DN32)	ALUMINIUM BRONZE
20	1	LEVER	ALUMINIUM BRONZE
23	1	SPRING	STAINLESS STEEL 302
24	1	ADJUSTING SCREW	ALUMINIUM BRONZE
27	1	NEEDLE	ALUMINIUM BRONZE
28	1	CAP	ALUMINIUM BRONZE
38	1	SCREW (DN15 to DN25)	STAINLESS STEEL A4
39	1	FIN (DN32)	ALUMINIUM BRONZE
44	1	CAP NUT (DN25/32)	ALUMINIUM BRONZE
49	1	LOCK NUT (DN25/32)	ALUMINIUM BRONZE
61	1	PIN	STAINLESS STEEL A2