



AUTEXIER

MANUFACTURER OF INDUSTRIAL VALVES

93 Rue Louis Blanc - 02300 CHAUNY - FRANCE
 Phone : +33 (0)3 23 52 02 86 Fax : +33 (0)3 23 39 52 28
 Website : www.autexier.fr

Ref. 190 / 390 Family : 27

Rev. 17

Date : 30 Jan. 2026

Page 1/1

BRONZE SAFETY VALVE

Ref. 190.Ø / 190.ØBP / 390.Ø

SERIES :

- 190.Ø : FPM disc
- 190.ØBP : VMQ disc (low pressure)
- 390.Ø : PTFE disc
- Male inlet / female outlet
- With lifting test handlever

For material compatibility, contact us

CARACTERISTICS :

- PN40 (Nominal Pressure)
- ENDS : BSP Threads
- MATERIAL : BRONZE CC491K

MAXIMUM CONDITIONS OF USE :

- Ref. 190 : 40 bar of -15°C to 200°C
- Ref. 190BP : 40 bar of -50°C to 220°C
- Ref. 390 : 40 bar of -50°C to 225°C

APPLICATIONS :

- Hot water and Industrial fluids
- Water-based fluids
- Steam up to 8 bar (FPM)
- Steam 8 to 15 bar (PTFE)
- Neutral gases (compressed air,...)

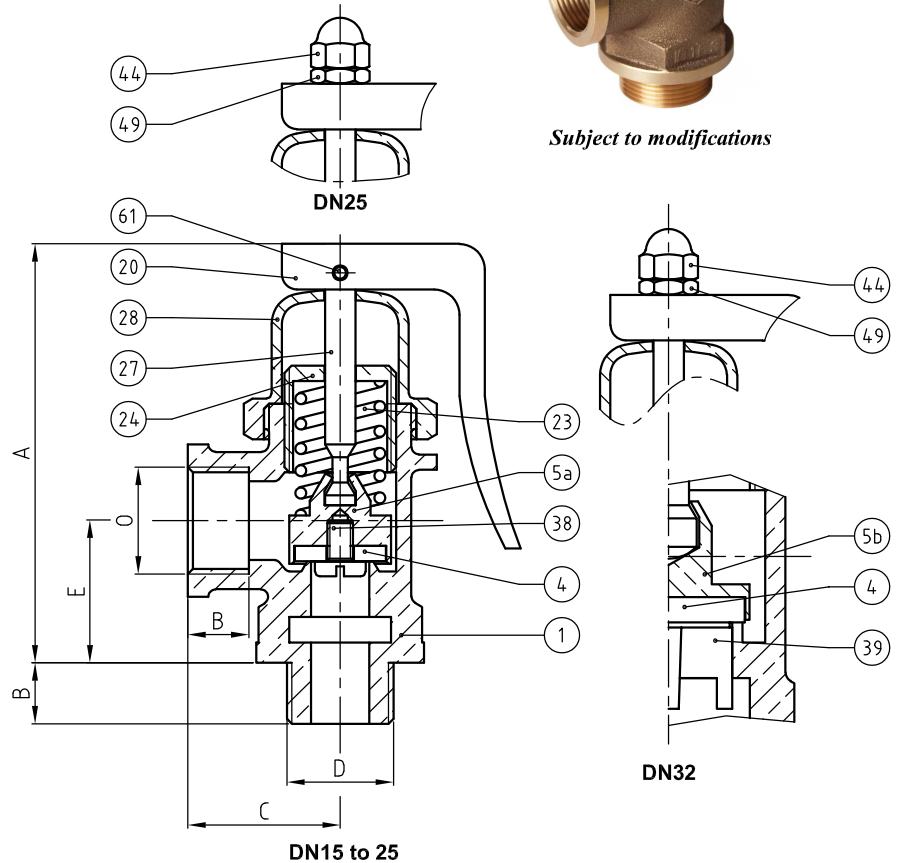
OPTIONS :

- Nickel coating
- Degreased disc
- Flanged or NPT connection

Specific dimensions, contact us



Subject to modifications



| DIMENSIONS | | | | |
|----------------|--------|--------|-------|----------|
| DN | 15 | 20 | 25 | 32 |
| A (mm) | 88 | 100 | 120 | 149 |
| B (mm) | 12 | 14 | 16 | 18 |
| C (mm) | 30 | 35 | 40 | 45 |
| E (mm) | 28 | 35 | 39 | 43 |
| D | G 1/2" | G 3/4" | G 1" | G 1 1/4" |
| O | G 1/2" | G 3/4" | G 1" | G 1 1/4" |
| Weight (Kg) | 0.405 | 0.555 | 1.062 | 1.585 |
| S inlet (mm²) | 103.9 | 227.0 | 490.9 | 706.9 |
| S outlet (mm²) | 272.6 | 456.8 | 720.6 | 1191.6 |

REFERENCES NORMS :

- Material : NF EN 1982 - NF EN 12163 - NF EN 12164 - NF EN 10272
- Testing & checking : NF EN 12266-1/-2 (bench test)
- Threads : ISO 228-1

Ref. instruction of assembling : 0904DA091E

Ref. instruction of operation : 0904DA094E

Mounting & assembly guides are available on our website.

These data are for information and can be modified without notice. It is not up to us to appreciate specifications. It is up to the customer to verify the adequacy between the equipment chosen and the real conditions of use.

| NOMENCLATURE | | | |
|--------------|-----|----------------------------|---------------------------------|
| Rep | Qty | Designation | Material |
| 1 | 1 | BODY | BRONZE |
| 4 | 1 | DISC | 190:FPM / 190BP:VMQ 390:PTFE |
| 5a | 1 | DISC HOLDER (DN15 to DN25) | BRASS |
| 5b | 1 | DISC HOLDER (DN32) | BRASS |
| 20 | 1 | LEVER | BRONZE |
| 23 | 1 | SPRING | STAINLESS STEEL 302 |
| 24 | 1 | ADJUSTING SCREW | BRASS |
| 27 | 1 | NEEDLE | BRASS |
| 28 | 1 | CAP | BRONZE |
| 38 | 1 | SCREW (DN15 to DN25) | STAINLESS STEEL A4 |
| 39 | 1 | FIN (DN32) | BRONZE |
| 44 | 1 | CAP NUT (DN25/32) | BRASS |
| 49 | 1 | LOCK NUT (DN25/32) | BRASS |
| 61 | 1 | PIN | STAINLESS STEEL A2 |