



AUTEXIER

**MANUFACTURER OF INDUSTRIAL MARINE AND OIL & GAS VALVES
IN BRONZE AND ALUMINIUM-BRONZE**

93, rue Louis Blanc - 02300 CHAUNY - FRANCE
Tel: +33 (0)3.23.52.02.86 - Fax: +33 (0)3.23.39.52.28
www.autexier.fr

Instructions of assembly and maintenance for reflex glass indicators



162

I) Checking at the delivery

Check at receipt that the packaging has not been damaged, that the delivered reflex glass indicator is in accordance with your order and that the material is not damaged.

II) Storage

The reflex glass indicators can reach the site several months before commissioning. Performance may be degraded if special care is not taken in their storage and protection.

It is recommended to store the reflex glass indicators in a clean, closed, protected from weather and projections of sand, dust and other solid particles. Leave them as much as possible in their original packaging. The plugs, protections threads, plastic envelopes, will be removed at the time of installation. Avoid impacts on the sealing surfaces of the threads.

III) Assembly of the indicator

- 1) The level indicators must be handled with particular care. Prevent the ingress of foreign bodies in the reflex glass indicators during installation and operation.
- 2) This equipment can not be installed in an explosive area

IV) Instructions

- 1) It is strictly forbidden to neutralize the mechanism of the reflex glass indicator.
- 2) Any foreign body must block the entries of the reflex glass indicator.
- 3) The reflex glass indicator must be installed in a place where there is no risk of shock or water hammer which would endanger working.
- 4) Insulate the equipment if the temperature of contact requires it (for staff in case of explosive atmosphere in or out of the equipment), and allow only the access to the approved staff. For the equipment, it is imperative to stay in a beach temperature indicated on the identification plate or failing on the product data sheet. Take care not to have fluid in changing state (gel) may damage the tube.
- 5) It is imperative to respect the conditions of use stated (pressure, temperature, fluid) during your request to our services (no corrosive fluids or fluids which may cause significant wear, no unstable fluids from which decomposition may cause risk, do not use several fluids likely to react each other to generate derivatives leading to an explosive atmosphere or may not viscous fluids solidify at a moment or another).
- 6) Limit as much as possible the tensions due to failure alignments of the piping connections system.



- 7) It is necessary to eliminate any previous and post pressure before removing the level indicator and be sure not to create an explosive inside or outside the reflex glass indicator. The staff operating the setting up of the indicator will be trained to perform this operation and will wear all necessary protections linked to the carried fluid.
- 8) Do not let the mechanism in intermediate position for a long time to avoid any phenomenon of cavitation and/or erosion.
- 9) Do not modify the documents furnished by AUTEXIER (instructions, metal plates, certificates etc.).

CAUTION: AUTEXIER is not anymore responsible of the good working of the level indicator if this one has been dismantled or modified by a person not approved by AUTEXIER.

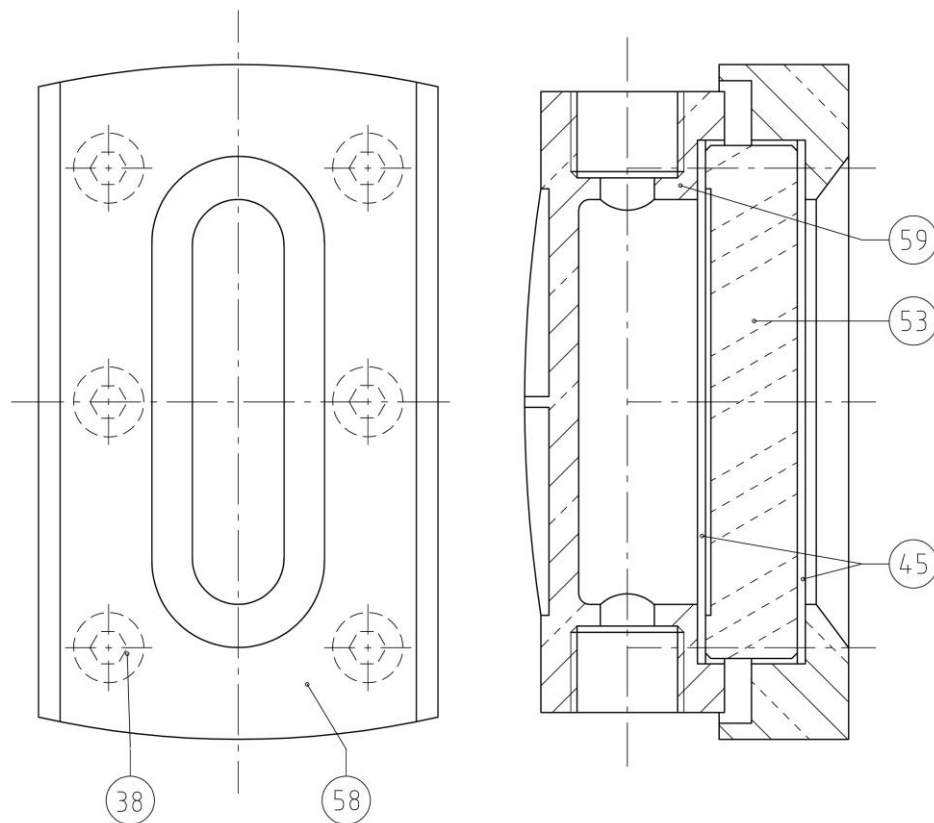
V) Operating / Maintenance

It is imperative to keep the reflex glass indicator clean and ready to operate. It is necessary to check regularly that any foreign body will jam the piping and any particles and impurities will endanger the system.

VI) Guarantee

All our products are guaranteed during twelve months from the delivery against any defect of material or manufacturing, when the conditions of use are respected: this guarantee is limited to the replacement or to the repair by our company of the defective recognized parts. We decline all responsibility in case of non respect with our instructions.

Ref. 162



VII) Marking

After being tested and adjusted, each level indicator is sealed by AUTEXIER. If another agency makes a mark by punching the level indicator should not be damaged. Poorly executed, deformations could make tap fugitive, or inoperative. Punching of thin walls is prohibited.

Level indicators are identified by a label with the following information:

- The date of shipment

- Specifications:

1 - Designation: Reference of reflex glass indicator

2 - Number of the linked document and du number of declaration of conformity to directive 2014/68/EU

3 - Inlet nominal diameter and outlet nominal diameter

4 - Maximum conditions of use





5 - Envelope pressure test

6 - Safety pressure

7 - Set pressure (xx for this product)

8 - Group of fluid G for Gas / L for Liquid or S for Steam

- If requirement, **CE** marking with number of identifying the notified body 0094 (LRQA)

 AUTEXIER <small>FABRICANT EN ROBINETTERIE INDUSTRIELLE 93 RUE LOUIS BLANC / 02300 CHAUNY FRANCE / + 33 (0)3 23 52 02 86</small>		<i>jj/mm/aa :</i>	
<i>Désignation :</i> 1		<i>N° Doc. :</i> 2	<i>Dcl :</i> 2
	<i>Entrée (Inlet) : DN</i> 3		<i>Sortie (Outlet) : DN</i> 3
	<i>PN (NP) :</i> 4 Bar		<i>TS (Mini./Max.) :</i> 4 °C
<i>Pression d'essais (Test pressure) PT :</i> 5 Bar			 0094
<i>Pression maximale admissible (Safety pressure) PS :</i> 6 Bar			
<i>Pression de tarage (Set pressure) PDO :</i> 7 Bar			
<i>Groupe de fluide (Group of fluid) :</i>  8			

It is imperative to respect the conditions of use stated on the rating plate (pressure, temperature, and fluid) under penalty of equipment damage and void the warranty.

Ref. Document 0904DA144E version 03 of 03 February 2025

