



AUTEXIER

MANUFACTURER OF INDUSTRIAL VALVES

93 Rue Louis Blanc - 02300 CHAUNY - FRANCE
 Phone : +33 (0)3 23 52 02 86 Fax : +33 (0)3 23 39 52 28
 Website : www.autexier.fr

Ref. 190/290/390 Family:27

Rev. 11

Date : 30 Jan. 2026

Page 1/1

BRONZE SAFETY VALVE

Ref. 190.Ø.Ø / 190BPØ.Ø / 390.Ø.Ø

SERIES :

- 190.Ø.Ø : FPM disc
- 190BPØ.Ø : VMQ disc (low pressure)
- 390.Ø.Ø : PTFE disc
- Male inlet / female outlet
- With lifting test handlever

For material compatibility, contact us

CARACTERISTICS :

- PN40 (Nominal Pressure)
- ENDS : BSP Threads
- MATERIAL : BRONZE CC491K

MAXIMUM CONDITIONS OF USE :

- Ref. 190 : 40 bar of -15°C to 200°C
- Ref. 190BP : 40 bar of -50°C to 220°C
- Ref. 390 : 40 bar of -50°C to 225°C

APPLICATIONS :

- Hot water and Industrial fluids
- Water-based fluids
- Steam up to 8 bar (FPM)
- Steam 8 to 15 bar (PTFE)
- Neutral gases (compressed air,...)

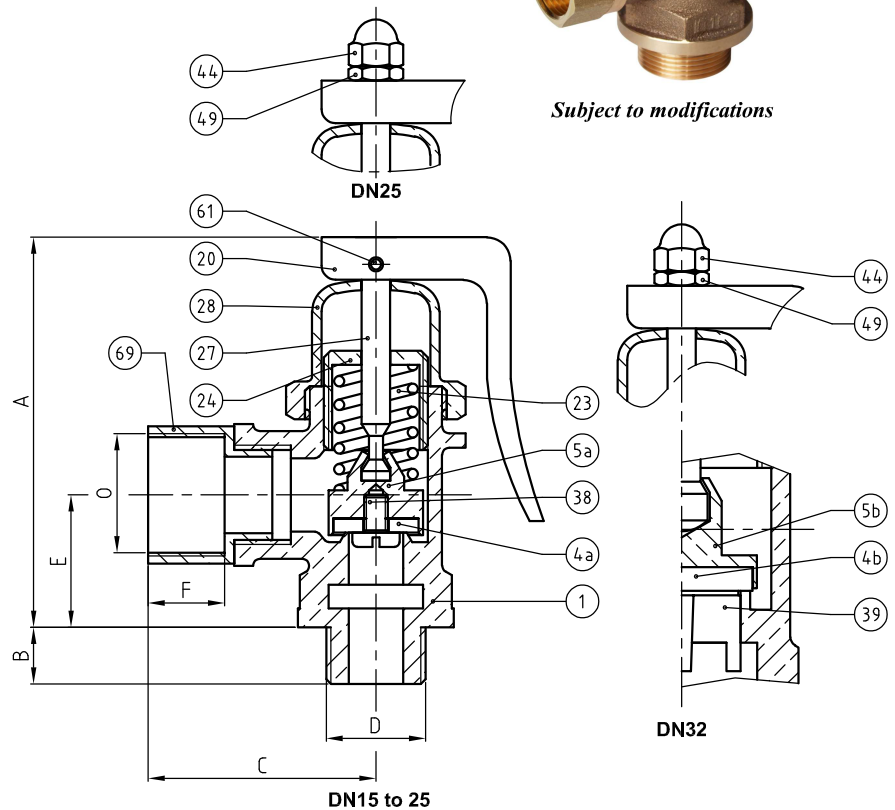
OPTIONS :

- Nickel coating
- Degreased disc
- Flanged or NPT connection

Specific dimensions, contact us



Subject to modifications



DIMENSIONS				
DN	15/20	20/25	25/32	32/40
A (mm)	88	100	120	149
B (mm)	12	14	16	18
C (mm)	44*	53*	59*	64*
E (mm)	28	35	39	43
F (mm)	10	12	14	15
D	G 1/2"	G 3/4"	G 1"	G 1 1/4"
O	G 3/4"	G 1"	G 1 1/4"	G 1 1/2"
Weight (Kg)	0.575	0.730	1.202	1.775
S inlet (mm²)	103.9	227.0	490.9	706.9
S outlet (mm²)	456.8	720.6	1191.6	1579.5

*Under reserve

REFERENCES NORMS :

- Material : NF EN 1982 - NF EN 12163 - NF EN 12164 - NF EN 10272
- Testing & checking : NF EN 12266-1/-2 (bench test)
- Threads : ISO 228-1
- Stainless steel fasteners : NF EN 10269

Ref. instruction of assembling : 0904DA091E

Ref. instruction of operation : 0904DA094E

Mounting & assembly guides are available on our website.

These data are for information and can be modified without notice. It is not up to us to appreciate specifications. It is up to the customer to verify the adequacy between the equipment chosen and the real conditions of use.

NOMENCLATURE			
Rep	Qty	Designation	Material
1	1	BODY	BRONZE
4	1	DISC	190:FPM / 190BP:VMQ 390:PTFE
5a	1	DISC HOLDER (DN15 to DN25)	BRASS
5b	1	DISC HOLDER (DN32)	BRASS
20	1	LEVER	BRONZE
23	1	SPRING	STAINLESS STEEL 302
24	1	ADJUSTING SCREW	BRASS
27	1	NEEDLE	BRASS
28	1	CAP	BRONZE
38	1	SCREW (DN15 to DN25)	STAINLESS STEEL A4-70
39	1	FIN (DN32)	BRONZE
44	1	CAP NUT (DN25/32)	BRASS
49	1	LOCK NUT (DN25/32)	BRASS
61	1	PIN	STAINLESS STEEL A2
69	1	SLEEVE	BRASS