



AUTEXIER

MANUFACTURER OF INDUSTRIAL VALVES

93 Rue Louis Blanc - 02300 CHAUNY - FRANCE
Phone : +33 (0)3 23 52 02 86 Fax : +33 (0)3 23 39 52 28
Website : www.autexier.fr

Ref. ACH Family : 40

Rev. 00

Date : 10 Jan. 2023

Page 1/1

BRONZE HINGES

Ref. ACH.06F

SERIES :

- ACH

- Removable opening

For material compatibility, contact us



CHARACTERISTICS :

- MATERIAL : BRONZE CC491K

MAXIMUM CONDITIONS OF USE :

- Of -10°C to 250°C

APPLICATIONS :

- Doors

- Flap doors

- Windows

OPTIONS :

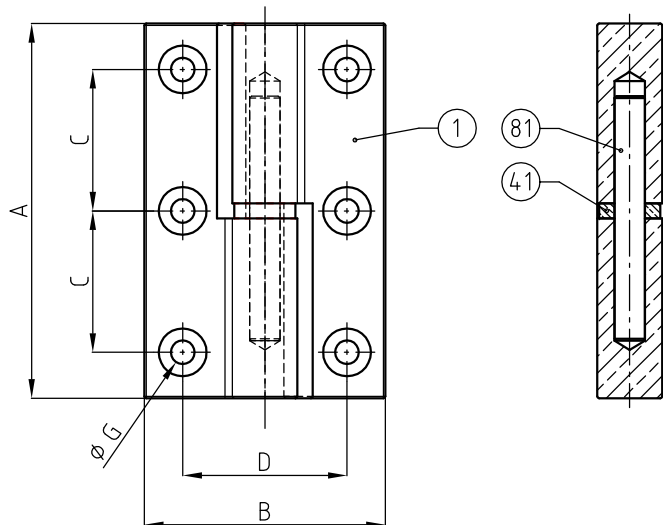
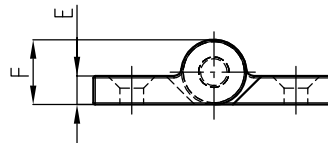
- Stainless axis

- Other dimensions

Specific dimensions, contact us



Subject to modifications



NOMENCLATURE			
Rep	Qty	Designation	Material
1	2	HINGE	BRONZE
41	1	WASHER	BRASS
81	1	AXIS	STEEL

REFERENCES NORMS :

- Material : NF EN 1982 - NF EN 12163 - NF EN 12164 - NF EN 10272

- Testing & checking : NF EN 12266-1/-2 (bench test)

Ref. instruction of assembling :

Ref. instruction of operation :

Mounting & assembly guides are available on our website.

DIMENSIONS	
A (mm)	98
B (mm)	63
C (mm)	37
D (mm)	43
E (mm)	7.5
F (mm)	17
G (mm)	6.2
Weight (Kg)	0.460

These data are for information and can be modified without notice. It is not up to us to appreciate specifications. It is up to the customer to verify the adequacy between the equipment chosen and the real conditions of use.