



AUTEXIER

MANUFACTURER OF INDUSTRIAL VALVES

93 Rue Louis Blanc - 02300 CHAUNY - FRANCE
 Phone : +33 (0)3 23 52 02 86 Fax : +33 (0)3 23 39 52 28
 Website : www.autexier.fr

Ref. 162 Family : 25

Rev. 05

Date : 14 Oct. 2022

Page 1/1

BRONZE REFLEX GLASS INDICATOR

Ref. 162

SERIES :

- 162

For material compatibility, contact us



CHARACTERISTICS :

- PN16 (Nominal Pressure)
- ENDS : BSP Female threads
- MATERIAL : BRONZE CC491K

MAXIMUM CONDITIONS OF USE :

- 16 bar of -20°C to 225°C

APPLICATIONS :

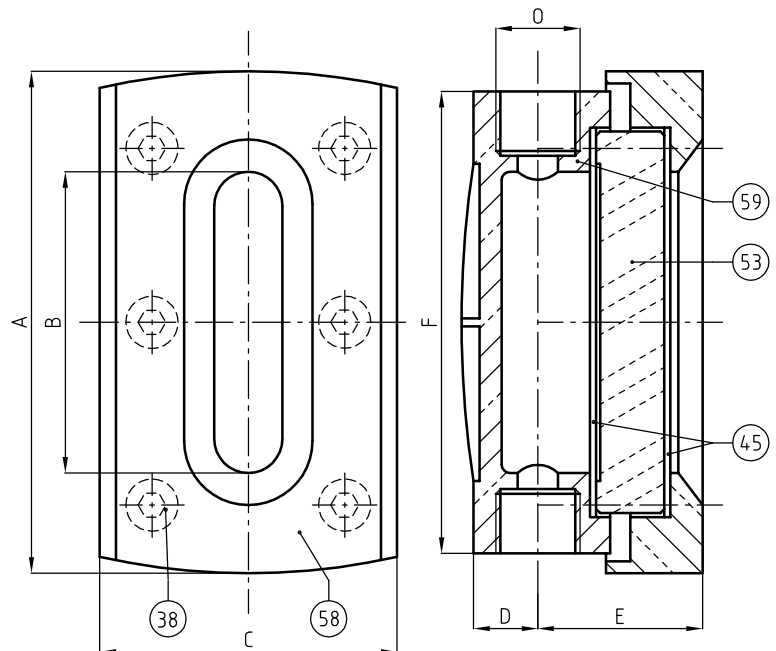
- Water-based fluids
- Oil & gas
- Saturated steam (13 bar)
- **Can not be fitted with any type of packing**

Subject to modifications

OPTIONS :

- Tightness packing special oil & gas
- With nipple multiple assembly Ref. C2800.15
- Tube connections CTUB.Ø

Specific dimensions, contact us



NOMENCLATURE			
Rep	Qty	Designation	Material
38	n	SCREW	BICHROMATED STEEL
45	2	GASKET	KLINGERITE
53	1	REFLEX GLASS	PYREX
58	1	SUPERIOR BOX	BRONZE
59	1	INFERIOR BOX	BRONZE

REFERENCES NORMS :

- Material : NF EN 1982 - NF EN 12163 - NF EN 12164 - NF EN 10272
- Testing & checking : NF EN 12266-1/-2 (bench test)
- Thread : ISO 228-1

Ref. instruction of assembling : 0904DA144E

Ref. instruction of operation : 0904DA145E

Mounting & assembly guides are available on our website.

DIMENSIONS										
Num	00	01	02	03	04	05	06	07	08	09
A (mm)	125	145	170	195	220	250	280	310	350	365
B (mm)	75	95	120	145	170	200	230	260	300	320
C (mm)	74	74	74	74	74	74	74	74	74	74
D (mm)	19	19	19	19	19	19	19	19	19	19
E (mm)	53	53	53	53	53	53	53	53	53	53
F (mm)	115	135	160	185	210	240	270	300	340	355
n	6	8	8	8	12	12	12	14	16	16
O	1/2"	1/2"	1/2"	1/2"	1/2"	1/2"	1/2"	1/2"	1/2"	1/2"
Weight (Kg)	1.815	2.100	2.410	2.835	3.470	3.555	3.910	4.490	5.180	5.420

These data are for information and can be modified without notice. It is not up to us to appreciate specifications. It is up to the customer to verify the adequacy between the equipment chosen and the real conditions of use.